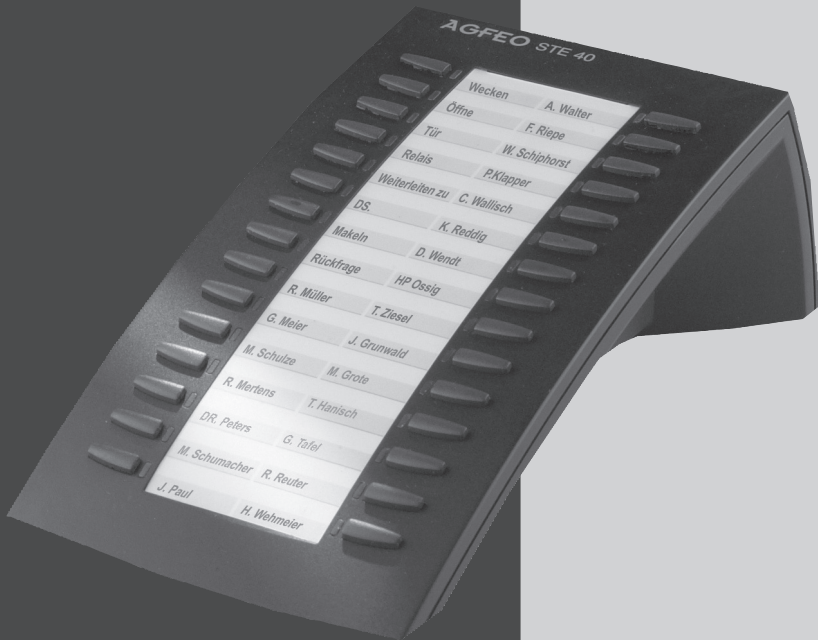


STE 40 DSS Console



AGFEO

einfach | perfekt | kommunizieren

User Instructions

The System Telephone Expansion STE 40 is intended for use with the ST 31 and ST 40 System Phones from firmware 1.0c or higher.

Connected to an ST 31 the STE 40 can be used with following PBX Systems:

- AS 151, AS 181 from firmware 6.3b
- AS 151 plus, AS 181 plus, AS 181 plus EIB from firmware 8.1
- AS 281 All-In-One, AS 35, AS 35 All-In-One from firmware 7.6
- AS 40P (P400-1), AS 4000 (P400-1), AS 100 IT (P400 IT) from firmware 7.6
- AS 43, AS 45, AS 200 IT from firmware 7.6

Connected to an ST 40 the STE 40 can be used with following PBX Systems:

- AS 151 plus, AS 181 plus, AS 181 plus EIB from firmware 8.1
- AS 281 All-In-One, AS 35, AS 35 All-In-One from firmware 7.1
- AS 40P (P400-1), AS 4000 (P400-1), AS 100 IT (P400 IT) from firmware 7.1
- AS 43, AS 45, AS 200 IT from firmware 7.1

Up to 48 STE 40 may be registered which will depend on the type of telephone system in use and firmware level.

Up to date firmware can be found in the download area of our homepage www.agfeo.com.

NOTE: For the operation of the STE 40 you will require the optional Power Supply Unit. Order No. 1542431 which can be obtained via your dealer or distributor.

Safety Notice:

- Do not work on the extension wiring or connect/disconnect the ST 31/ST40 or STE 40 during a thunder storm.
- Install extension wiring of the units in a manner that it is not walked on or causing anybody to trip over them.
- Ensure that no liquids are allowed to enter the housing of the Digital System Phones or the expansion unit as otherwise short circuiting may result.

About this User Manual

This manual contains information on the set up procedure and a brief operational instruction of the System Telephone Expansion STE 40. A detailed description of features relating to the Telephone System or the System Telephone can be found in the respective user manual of these.

AGFEO System Telephone Expansion STE 40

Table of Contents

User Instructions.....	2
Safety Notice:.....	2
About this User Manual	2
Table of Contents.....	3
Very Important Installation Note:	3
Feature Description of the STE 40	4
Connection of STE 40	5
STE 40 Connections	6
Attach STE 40 to ST 40	7
Programmable Function Buttons (Overview)	8
LED - Indication Associated to Function Buttons	10
Changing Button Assignment.....	12
Location	13
Cleaning.....	13
Insert Button Label	13
Firmware Upgrade ST 40 or ST 31.....	14
Technical Data	14

Very Important Installation Note:

Please note that it will be imperative that you use the optional power supply STE 30 / ST 40 / STE 40 for the operation of the STE 40 on your telephone system.

AGFEO System Telephone Expansion STE 40

Feature Description of the STE 40

The STE 40 will add 30 freely programmable function buttons with LED indication to your ST 31 or ST 40 System Phone.

The unit can be connected to any ST 31 or ST 40 and operated with telephone systems which are listed within the user instructions.




The STE 40 will compliment the system phone ST 31 or ST 40 and can be connected via the fixed connection clips.


This box contains:

- 1 System Telephone Expansion STE 40
- 1 Connecting Cable (short)
- 1 User Guide & Label Inserts

AGFEO System Telephone Expansion STE 40

Connection of STE 40

1. Disconnect ST 31 or ST 40 System Phone from the telephone system.
2. In case of having already connected a power supply and/or STE 40 to your System Phone, unplug the power supply from your system phone/STE 40.
3. Insert the short connection cable enclosed into the socket marked  underneath the STE 40. Make sure that the plug has clicked into place.
4. Insert the plug on the other end of the same cable into the socket of the ST 40 telephone marked . Ensure the plug has clicked into place.
5. Guide the cable along the cable channel underneath the ST 31 / ST 40 telephone and the STE 40 expansion unit.
6. Connect the plug of the power supply STE 30 / STE 40/ ST 40 to the socket of the STE 40 marked .
7. Connect the power supply to the mains socket.
8. Re-establish the connection between ST 31 / ST 40 and the telephone system.
9. The STE 40 will register automatically to the connected ST 31 / ST 40.

Should you like to connect more than one STE 40 to the ST 31 / ST 40 system phone (up to four STE 40 may be connected to each System Phone), then connect the next STE 40 to the socket of the first STE 40 marked .

Important notice:

In case you are using 2 STE 40, please connect the power supply to the 2nd expansion unit.

The use of 3 or 4 STE 40 requires a further power supply.

It is mandatory to disconnect the ST 31 or ST 40 from the telephone system before connecting the expansion unit.

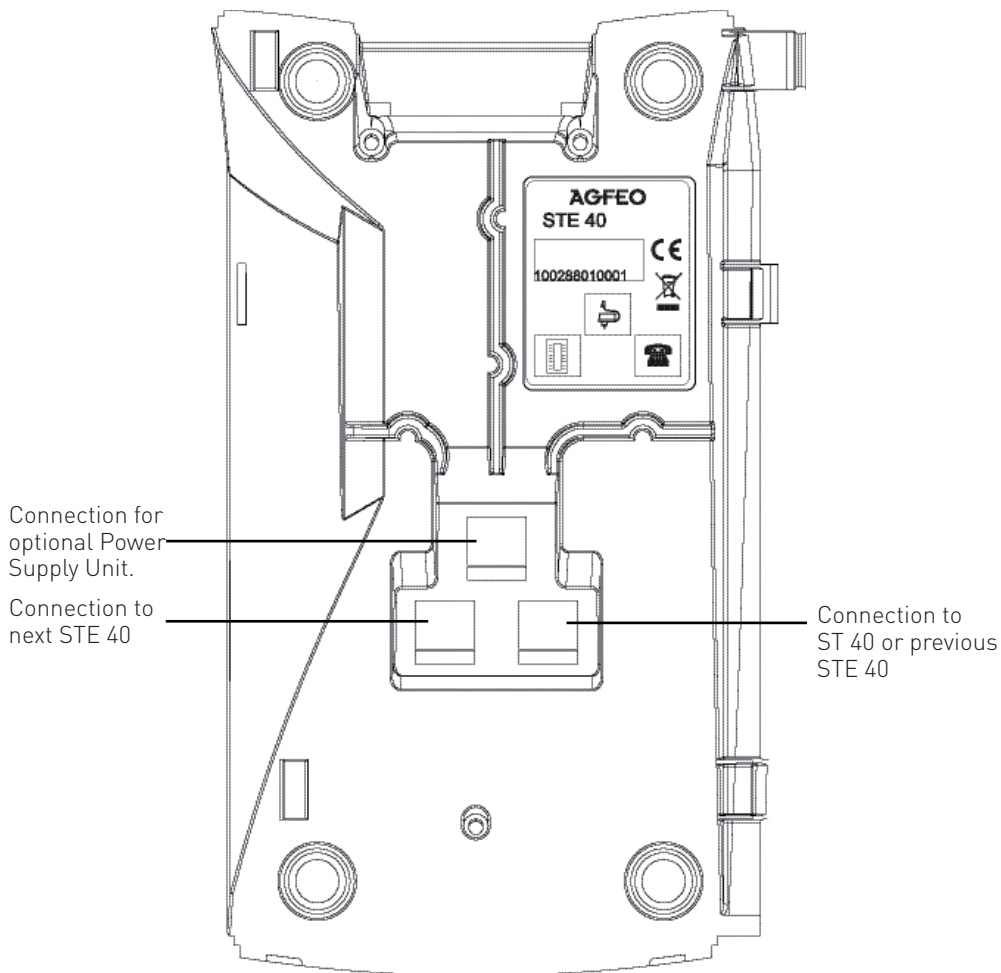
Should your system phone already be connected to a power supply or STE 40, it is required to unplug the power supply before proceeding.

Attention:

Disregarding the above mentioned connection sequence can cause hardware damages (ST 40 / STE 40) due to the indicated voltages.

AGFEO System Telephone Expansion STE 40

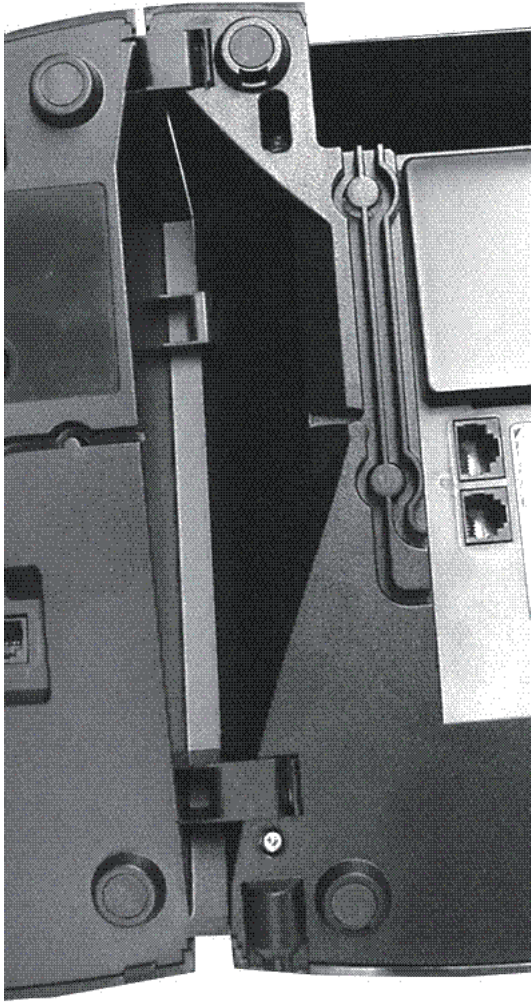
STE 40 Connections



AGFEO System Telephone Expansion STE 40

Attach STE 40 to ST 40

To attach the STE 40 to the System Phone press the hooks of the STE 40 into the slots provided of the ST 31 or ST 40 as shown below.



AGFEO System Telephone Expansion STE 40

Programmable Function Buttons (Overview)

TAM activation	To switch answering machine on or off (optional module). From another system phone will only work if notification to system phone has been switched on. (Info to System)
TAM info	To listen to recorded messages.
TAM Memo	To record memo or telephone conversation in progress.
Reject	Reject an incoming call. Depending on Call Distribution caller will get busy tone.
Call Waiting on / off	You can select if: Set to off busy tone will be returned if the extension is on another call or off hook. A waiting call should only be visually indicated on your phone. (set to visual) Or if a call waiting tone should also be signalled. (set to audible)
Call Filter	To switch call filter on or off.
Call Deflection	Will divert an incoming call during the ringing phase. There will be no change to the ringing tone when diverted. The caller will not be aware that the call was forwarded.
Call Log	Displays unanswered Calls in Call Log.
Cleaning	In connection with the check in / check out button. This can be used to indicate to the front desk that a room has been cleaned and is ready for occupation.
Do not Disturb (DND)	This will disable the Tone Ringer Special function buttons may be set: DND for internal calls DND for external calls DND for internal- and external calls.
Tannoy	Announcement via Public Address Amplifier connected to the Telephone System
Night Service (AVA 2)	Night Service on or off. Special function buttons may be set: Night Service can be switched for each trunk line. Night Service can be switched for all trunk lines.
Call Forwarding (AVA 3)	Enable / Disable Call Forward if designated extension does not answer an incoming call. Special function buttons may be allocated: Switch Call Forward for each trunk line. Switch Call Forward for all trunk lines.
Busy on Busy	Returns Busy Tone to Caller if one Extension is Busy within Call Distribution Group. Special Buttons can be assigned -Busy on Busy for each Call Distribution Group switchable separately -Busy on Busy for call Call Distribution Group switchable together
Call by Call	Select carrier for individual call from LCR list.
Check in/out	Check in / Check out for Hotel applications. Will start or stop call logging and switch on or off trunk line access.
Page (Tannoy)	Pageing Announcement to System Phones. Programmable function Button - Page specific Extensions.
Units	Display Call Cost
Extern	Select a different MSN or DDI number for an outgoing call, if available. This will select and transmit a different caller id to the network. Function button may be programmed for a specific - or selectable outgoing line.
Call Capture	Malicious Call Identification via ISDN-Exchange. Must be setup from network provider.
Remote functions	Sending of stored DTMF Tones (1..0 * #) for a remote interrogation of a Telephone Answering Machine (TAM)
Remote Dial	Call can be set up for another telephone.
Group Button	Log in or out of Groups and features

AGFEO System Telephone Expansion STE 40

Programmable Function Buttons (Overview)

Headset	To use a headset. (Digital System Phones only)
Call Pick Up	To Pick Up a call ringing on another extension. A Special Function Button may be assigned for this feature.
Mute	To mute microphone on your telephone.
Withhold	To withhold own number being forwarded to the number called. (Feature must be supported by network provider)
Internal Button	To Dial Extensions. Function Button can be assigned to call specific Extension (DSS)
ISDN-Hold	To Hold an external call in the Telephone Exchange (only available on PTMP ISDN lines)
Conference	To set up a Conference Call with Internal and or External calls.
Speaker Volume	To adjust Speaker Volume for Handsfree or On Hook use.
LCR	To set or cancel Least Cost Routing (LCR) on your System Phone.
Line Button	To access line directly by pressing the line button and to display line status
Call Split	To talk to more than one Call in turn without connecting them.
Brokers Call	To talk to one internal and one external call at a time without connecting them.
Multifunction	To switch on or off timed function which are controlled by the telephone system such as day or night service. This can also be diversions, relays, answering machine etc. Button can be programmed to switch the timer on or off or the function itself.
Account Code	An account code may be allocated to a call. This may be done with a set account code on a function button or with a general function, ie enter account code after function button is pressed.
Relays	To activate a Relays. A special function Button may be assigned.
Reserve	To reserve a line should all lines be engaged at the time. (Ring Back when free).
Enquiry Call	To establish or set up an Enquiry Call
Sensor	Set or disable sensors.
SMS Info	Will list all saved SMS messages. (Only if A-Module 40 is fitted)
Write SMS Message	To write a SMS message. (Only if A-Module 40 is fitted)
Telephone Lock	To Lock the Phone. Only emergency and direct numbers may be dialled if set.
Appointment	To set or cancel a preset Appointment Time.
Doorphone and Lock Release	Function Button can be assigned to connect to the Doorphone. A separate Button can also be assigned to activate the Lock Release.
Transfer	To transfer and connect an external call to an external call.
Diversion from (Follow me)	To divert all calls from another phone to the current phone used.
Diversion to	To divert all calls to another extension- or external number.
Call List	Displays the last calls incoming and outgoing, depending on programming. Numbers can be transferred to the phone book by just pressing the phone book button.
Wake Up Call	To set or cancel a Wake Up call.
Memory Button	To Call a preset Telephone Number
- Public	- A number is stored in the Telephone System Memory
- Private	- A number is only stored in your telephone

AGFEO System Telephone Expansion STE 40

LED - Indication Associated to Function Buttons

	LED on	LED off	LED flashes
Answering Machine Mes- sages	Stored messages already listened to.	No Messages	New Messages
Call Waiting activation	enabled	disabled	
Call Log	Call Log entries already viewed	No numbers in Call Log	New Numbers in Call Log
Do Not Disturb	on	off	
Night Service	on	off	
Call Forwarding	set	off	
Busy on Busy	on	off	
Group Button	Logged in	Logged out	
Headset	active	off	
Withhold Number	on	off	
LCR	on	off	
Relays	on	off	Relay is being rung
SMS Info	Messages already read	No Messages	New Messages
Mute Button	enabled	disabled	
Telephone Lock	on	off	
Appointment	set	off	when appointment call is ringing
Ringer Off	on	off	
Doorphone and Lock Release	connected to door phone	switched off	called from door phone
Diversion from	enabled	disabled	
Diversion to	enabled	disabled	
Wake Up	set	off	Unanswered Wake Up Call

AGFEO System Telephone Expansion STE 40

LED - Indication Associated to Function Buttons

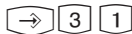
	LED on	LED off	LED flahes (slow)	LED flashes (fast)
TAM Activation	TAM switched on	TAM switched off		
Extension Button (DSS)	Extension Busy or off hook		The button is allocated to an answering machine1). If it has answered the call, then it can be picked up by presseing this button.	Exclusiv Hold.
Line Button	Line is in use	Line is availab- le to make an outgoing call	Inoming Call	Exclusiv Hold. Call can only be retrieved by the original extension.
Timer Button	Timer is on, function is off	Timer and function is off	Timer and func- tion is on	
Memory Dial Button		Goes off as soon as the call is answe- red	Flashes on inco- ming call from that number. Call can be pik- ked up.	

Line Button General Information

To have a meaningful presentation of line buttons it is suggested to programm two buttons for each ISDN line (2 B-Channels). By pressing a flashing line button when the phone is iddle will give information of the waiting callers number. Pressing this button when the phone is off hook will connect to that call.

AGFEO System Telephone Expansion STE 40

Changing Button Assignment



Start Program-
ming



Press Button to be pro-
grammed on the STE40



Enter first letter of required
function or browse using the
arrow buttons.



Confirm
entry



End programming

AGFEO System Telephone Expansion STE 40

Location

Select a suitable location for the STE 40 to be installed. Please observe the following points:

- Do not use locations where the unit could be subjected to water or chemicals.
- Rubber feet of the Console:

Your console has been manufactured for general use. Some chemicals found in furniture polish or other furniture care products may alter the substance of the rubber feet of the unit. Due to this influence it may be possible that the rubber feet of the DSS Console may leave some marks. We will not accept any liability for any of such occurrences. With reference to new furniture or polished furniture we would suggest to use a non-slip protective matt for your DSS Console.

Cleaning

To clean your DSS Console **use a soft damp cloth**. An antistatic cloth may also be used.

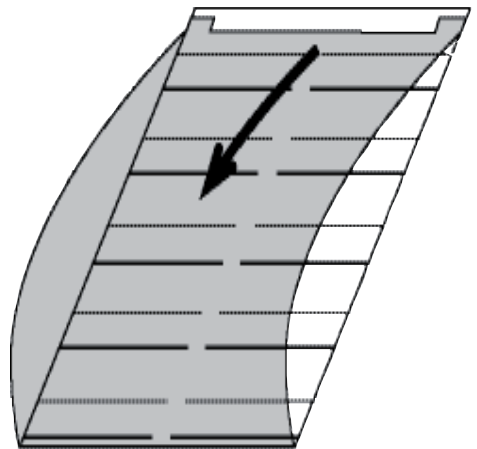
NEVER use a dry cloth as this could result in a static discharge which may damage electronic components within the unit. Please take great care that **NO MOISTURE** will enter the console.

Insert Button Label

The label can be removed by inserting the finger nail on the top of the plastic insert and housing. Move the insert downwards until it is curved. The label can now be removed.

To re-insert the label put the bottom of the clear plastic strip in the bottom slot of the telephone and follow the instruction above in reverse order.

To give a professional appearance, labels can be printed with the programming tool TK-Suite directly from your PC.



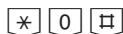
AGFEO System Telephone Expansion STE 40

Firmware Upgrade ST 40 or ST 31

The firmware of your telephone can be upgraded without the need of any hardware changes. Please follow the instructions if a firmware upgrade is required:



The handset is on hook and the telephone is idle.



Press the following buttons simultaneously *****, **0**, **#**. The ST 21 is now in service mode.



Press **1** for SoftwareUpdate



Enter the telephone number of the Update Server which is: +49 (0)521 44709 950. Depending on the line seizure set, you may have to prefix the number with 0 (9).

Confirm the entry by pressing the centre button. The Update Server is now being dialled and the update will begin.

The update will be completed in approx. 90 secs, after which the system phone will re-register to the telephone system. The current software will be displayed on the phone on start up. The firmware update is now completed.

Technical Data

Measurements:	L x W x H 234 x 128 x 80 mm
Power Consumption	max 0,5 W
Ambient Temperature	
- Operational / Storage	5°C bis 40°C / -25°C bis +70°C
Humidity	max 70% (none condensing)
Colours	Black / White / Silver

**AGFEO System Telephone
Expansion STE 40**



The crossed out wheeled bin on the product means that this belongs to the group of Electro- and electronic apparatus.

In this context you are directed by the European regulation to dispose of used apparatus
- at the point of buying an item of equal proportion / value
- at the local available collection point for disposal

With this you will participate in the reuse of material and valorisation of disused electric- and electronic apparatus, which otherwise could be a health hazard and be negative to the environment.



Ident no. 1101394

Subject to change without notice. No liability can be accepted for errors contained in this document.

Printed in Germany
0101

AGFEO GmbH & Co. KG

Gaswerkstr. 8

D-33647 Bielefeld

Internet: <http://www.agfeo.com>